

**September 29, 2024**

**11:15 A.M.**

**MY NEXT STEPS:**

**ANNOUNCEMENTS:**

*\*Please stand if able*

**Greeting**

**\*Song of Praise** "Come Thou Long Expected Jesus"

**\*Call to Worship** Isaiah 65: 17-25

**\*Song of Praise** "I Can Only Imagine"

**\*Opening Prayer**

**Welcome and Announcements**

**Offering** "Here As in Heaven"

**Prayer of Thanksgiving**

**Scripture Lesson** Revelation 21: 1-8

**Message** "A Garden State of Mind"  
*Rev. Allyce Logue*

**Time of Reflection**

**We Pray Together**

**\*Closing Song** "Better is One Day"

**\*Benediction**

- Memorize, "He will wipe every tear from their eyes. There will be no more death or mourning or crying or pain, for the old order of things has passed away." – Revelation 21: 4
- Reflect: Am I becoming the person God invites me to be?
- Bring your family to *Ask the Pastors* next Sunday service.

**MARK YOUR CALENDARS:**

- September 29<sup>th</sup>** Youth Group (5:30-7pm)
- September 30<sup>th</sup>** No Strings (6pm)
- September 30<sup>th</sup>** CRUX (6:30pm)
- October 1<sup>st</sup>** Cub Scouts (6:30pm)
- October 2<sup>nd</sup>** Resting in Prayer Grp. (6:30pm)
- October 2<sup>nd</sup>** Spiritual Gifts (6:30pm)
- October 2<sup>nd</sup>** Choir Practice (7pm)
- October 2<sup>nd</sup>** Boy Scouts (7pm)
- October 3<sup>rd</sup>** Prayer Quilt (9am)
- October 3<sup>rd</sup>** New Members Grp. (6:30pm)
- October 3<sup>rd</sup>** Young Adults Grp. (6:30pm)
- October 6<sup>th</sup>** Multi-Generational Grp. (9:30am)

**September 22<sup>nd</sup>, 2024 REPORT:**

<b>Night of Worship</b>	48
<b>In-Person Worship</b>	233
<b>On-line Worship</b>	52
<b>Building Fund</b>	\$ 250.00
<b>Designated Funds</b>	\$ 44.59
<b>General Offering</b>	\$ 8,426.30
<b>Weekly amount needed to meet budget</b>	\$ 10,519.23

**MISSION TRAIN.** Have you seen the Mission Train stationed in the chapel by the nursery? If you would like to support the work of our Women in Faith, special envelopes are available. Check out the display.

**EVERGREEN MANOR EVENTS.** The next dinner church at Evergreen will be October 7 at 6pm. We are looking for donations toward a Chili Dinner. Please also sign up to join us as a volunteer. Information and sign up is at the Welcome Desk.

**MURDER MYSTERY.** On Saturday Oct 12 HYM will be heading to Old Bedford Village to participate in their Murder Mystery Night. During this night, teens will have the opportunity to go into different buildings and try to solve different mystery scenarios. The phrase, "Murder Mystery," should be taken lightly and this activity is not meant, or intended to be scary for the teenagers. We will be meeting at the church at 5pm and will be home once the activity is complete. Teens should wear old sneakers and bring a flashlight. This is a free activity and all teens that attend are encouraged to bring friends.

**DONATIONS FOR TRICK OR TREAT NIGHT.** The Duncansville Community Days committee has asked us to contribute candy for Trick or Treat Night in Duncansville. If you would like to donate candy, please drop off at the church office.

**LIFE CHAIN PRO LIFE WITNESS DAY.** On October 6, St. Catherine's Church in Duncansville is participating in the National Life Chain and invites churches in our area to join them. We will be gathering in the St. Catherine's parking lot at 1pm and then stand along Route 22 for an hour of quiet witness and prayer.

**EVERGREEN DINNER CHURCH COORDINATOR VOLUNTEER NEEDED.** We are seeking a volunteer to coordinate the dinners served at Evergreen Manor. This role is to help support Barbara Webb who will continue to lead the worship and devotions. Responsibilities include preparing a menu, coordinating donations, emailing the church office to post announcements and

sign-up sheets. You do not need to attend Dinner Church to take on this role. Please contact the church office or Barbara Webb (703)785-3817 if you are interested in helping in this mission.

**PRECIOUS LIFE POSITION AVAILABLE.** Precious Life is hiring a Client Advocate at the Altoona office. If interested in checking this out, please contact Danielle Haluska at [danielle@plinc.org](mailto:danielle@plinc.org).

**BACKYARD CLUB MINISTRY.** Our Backyard Ministry has a constant need for new socks for kids and adults, new winter hats and gloves for kids, children's books, coloring books, pencils, crayons, and colored pencils. If you would like to donate, please bring items to the church office labeled for Back Yard Ministry.

**AMERICAN RESCUE WORKERS.** Needs are great as we work to restock our shelves. Please think about purchasing one extra item every time you go to the store to donate to the American Rescue Workers Food Pantry. ARW collected 135 lbs. of food in August from Hicks. Contact Paula Brennecke with any questions.

**COMMUNITY GROUPS LAUNCHED.** Interested in studying a book of the Bible or a devotional guide with members of your church community? Community Groups enable us the chance to be in relationship with others who seek to be disciplined by Jesus. Community Group listings are available in the Chapel area. Check them out today! Contact Pastor Allyce at [allyce@hickschurch.org](mailto:allyce@hickschurch.org) with any questions.



**ONLINE GIVING.** Making a one-time or recurring tithe to the church is so easy and safe. Go to [hickschurch.org](http://hickschurch.org) or use the QR code below and select online worship. There is a dropdown tab for online giving. This is a great way to tithe and give consistently and faithfully to the church.



## HICKS CHILDREN'S ministry

Our Children's Ministry's purpose is to assist parents with their children's life long journey to know, love and follow Jesus. We want to connect children to God and to each other as we teach and equip them to become disciples and create community. Need more info? Contact the church office at [office@hickschurch.org](mailto:office@hickschurch.org)

- Children in preschool through **6th grade** are encouraged to attend Sunday School Classes designed for their specific age group. All classrooms are located downstairs; specific grades are marked with hanging signage.
- The first Sunday of the month, Family Worship Services are held at the 9:45 worship time. During these services, we take a break from our classrooms to offer families the opportunity to worship, sing and pray together in the sanctuary.
- Our **Nursery** is fully staffed and is happy to take care of your babies and toddlers during today's worship service



community  
groups

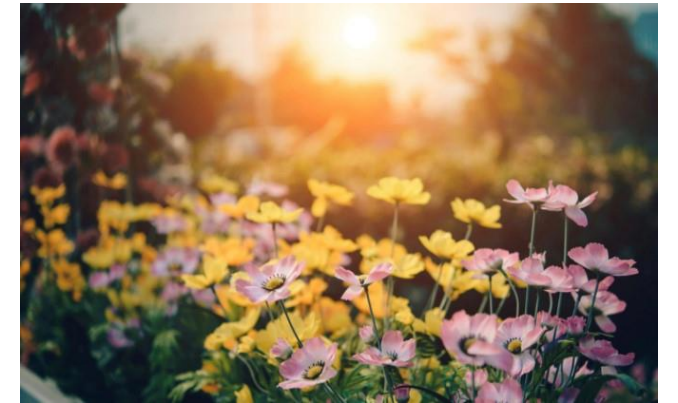
### Why join a Community Group?

Relationships, far more than church attendance are what God uses to grow and mature our faith in Him. One of the best ways we are able to grow as believers is by joining a community group. The Christian life was never meant for us to live alone. Joining a Community Group is a perfect way to connect with others to pray and explore God's word together. Interested in starting or joining a community group? Contact Pastor Allyce at [allyce@hickschurch.org](mailto:allyce@hickschurch.org).

*The altar flowers are presented by Betty Wilkinson  
in memory of Charles Wilkinson*

# HICKS MEMORIAL METHODIST CHURCH

*"Building Communities of Devoted Followers of Jesus"*



## "A Garden State of Mind"

September 29, 2024

### Hicks Memorial Methodist Church Values

Jesus First, Living Faith, Care Full,  
Self Forgetting, Mission Forward